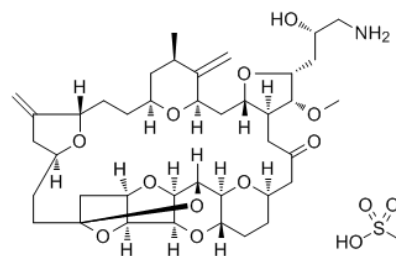


**Product Name** : Eribulin mesylate  
**Cat. No.** : PC-43537  
**CAS No.** : 441045-17-6  
**Molecular Formula** : C<sub>41</sub>H<sub>63</sub>NO<sub>14</sub>S  
**Molecular Weight** : 826.0022  
**Target** : Microtubule/Tubulin  
**Solubility** : 10 mM in DMSO



## Biological Activity

Eribulin mesylate (B1939, E7389, ER-086526) is a macrocyclic ketone analogue of halichondrin B, shows sub-nM growth inhibitory activities in vitro against numerous human cancer cell lines via inhibition of tubulin polymerization.

Eribulin induces G2-M cell cycle arrest and disruption of mitotic spindles.

Eribulin demonstrates marked in vivo activities at 0.1-1 mg/kg against human xenografts: MDA-MB-435 breast cancer, COLO 205 colon cancer, LOX melanoma, and NIH: OVCAR-3 ovarian cancer.

## References

Towle MJ, et al. *Cancer Res.* 2001 Feb 1;61(3):1013-21.

Vahdat LT, et al. *J Clin Oncol.* 2009 Jun 20;27(18):2954-61.

Okouneva T, et al. *Mol Cancer Ther.* 2008 Jul;7(7):2003-11.

Zheng W, et al. *Bioorg Med Chem Lett.* 2004 Nov 15;14(22):5551-4.

**Caution: Product has not been fully validated for medical applications. Lab Use Only!**

E-mail: tech@probechem.com